



Field Erected & Custom Blast Rooms

Custom Designed, Turn Key Blast Facilities Designed to Meet Your Specific Abrasive Blasting Requirements



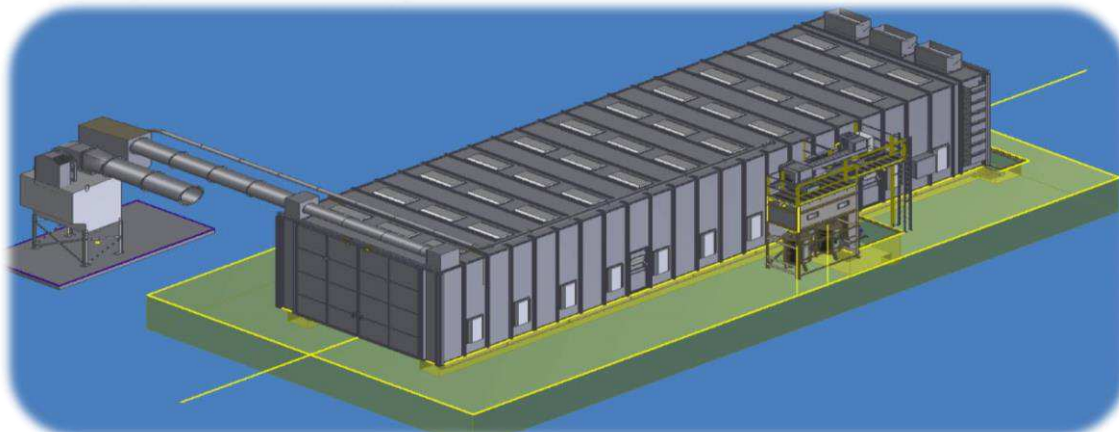
We are proud to partner with Empire Abrasive Equipment on turnkey blast rooms & related equipment. Empire has specialized in the design and manufacture of air blast equipment for over sixty years and produces the most extensive line of pneumatic blasting equipment available in the industry today.

In 2003 Empire acquired Hoffman Blast Room Equipment, the leader in heavy-duty air blast room technology at the time. Since the acquisition, Empire has improved Hoffman's existing designs and implemented their proven manufacturing processes and controls. Empire offers the best blast room equipment package and support network available in the industry today.

Dawson-Macdonald Company is the leader for Blast Room Projects in the North East. We employ factory trained technicians who provide an excellent support function for our customers after the sale & installation of your system.

Standard Features & Unique Options

- *Heavy-Duty Blast Enclosure Construction*
- *State of the Art Dust Collection Systems – MERV 15 Filtration*
- *Heavy-Duty Screw Auger Floor Recovery Systems*
- *Pneumatic Recovery Floors Systems for Lighter Density Media*
- *Above Grade Recovery Floor Designs Available*
- *Fluorescent – T8 – Ceiling and, or wall Panel Lighting*
- *Multiple Operator Systems*
- *Pressure Vessel Sizing from 3.5 Cu. Ft to Several Hundred Cu. Ft. Capacity*
- *Large Scale Media Storage Hoppers/Bins Available*
- *Custom Rubber Roll-Up Doors*
- *Heavy-Duty Powered Work Carts*
- *Robotic Integration*



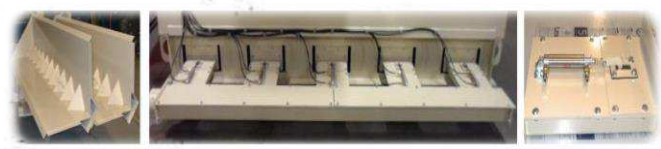
Dust Collection System Installed on Large Abrasive Blasting Cell



Twin Rotary Air-Wash Separators Installed on 2,300 Cu. Ft. Media Storage Hopper



Pneumatic Media Recovery Floor Components



Full Screw Auger Grit Recovery Floor Being Installed



Blast & Recovery System Being Installed in Customer Constructed Enclosure



Dust Collection & Heavy-Duty Ducting Installed on Transportation Equipment Blast Room



[Request Additional Information & Pricing](#)



Heavy-Duty Powered Work Cart



Dawson-Macdonald Co., Inc.
 845 Woburn Street, Wilmington, MA 01887
 Phone: 978 988 8034 | Fax: 978 657 8740 | Toll Free: 800 556 4456
info@dawson-macdonald.com

