

## Wet Abrasive Blast Systems



Model WT36 shown at left.  
Available in Stainless AND  
rotation molded construction.

### Advantages

- **Dust free, deep cleaning without imbedded abrasive**
- **Combines steps; washing and blasting**
- **Warping reduced/eliminated**
- **Closed loop filtration/rinsing is standard on all systems**
- **Wide range of cosmetic finish options; matt to luster**

### Process:

We define the **“Wet Tech”** process as a water/media (abrasive) slurry driven by the combination of our specially designed, high volume pump and regulated compressed air across a part surface for a customer’s specific application.

### Replaces:

- Manual and dry blast deburring
- Chemical use / disposal; minimized or eliminated
- Washing / dry / shot blasting are combined
- Goes a step beyond parts washing by combining with simultaneous applications

Our products are the result of **listening to our customers, engineers AND maintenance people**. We combine solid engineering with high quality stainless and no corrosive materials for high value, **durability**, and low, easy maintenance. We have established a global network of service oriented distributors who, along with our factory, are committed to **customer support**.

**In House Services:** In addition to manufacturing systems for end users, we have a lab in which we provide testing and limited run “job shop” Wet Tech processing. Please inquire for a proposal.



Standard Manual and Semi-Automated Cabinets from  
36" to 72" Square with many available options

Wet Technologies has a full process testing lab available for demonstration. Call us to see what the "Wet Tech" process can do for you.

**Surface Finish Reduction**

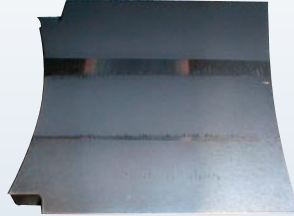


WT36RP with Small Parts Barrel

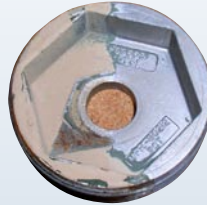
**Scale Removal**



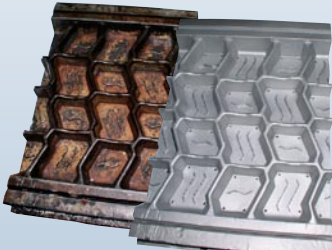
**Semiconductor Implant and Ceramic Tool Cleaning**



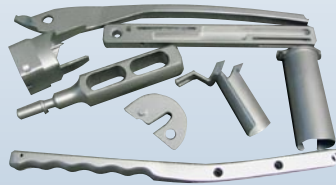
**Paint Stripping**



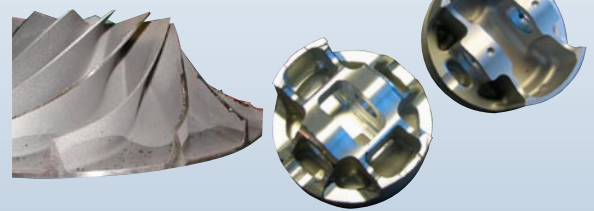
**Mold Cleaning**



**Medical/Surgical**



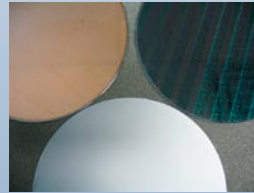
**Deburring**



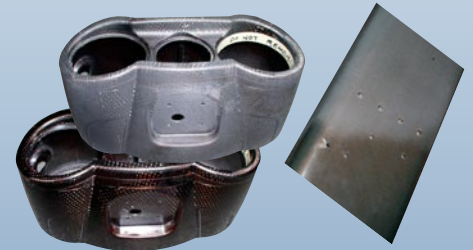
**Automotive Remanufacturing**



**Silicon Wafer Stripping**



**Composite Preparation**



Model	WT36RP	WT36SS	WT50SS	WT60SS
Interior Dimensions	36" x 36"	36" x 36"	50" x 50"	60" x 60"
Base Swing Door Dimensions	25"W x 28-1/2"H	24"W x 24"H	39"W x 34"H	47"W x 34"H
Optional Vertical Door Dimensions	25"W x 24"H	24"W x 24"H	39"W x 30"H or 36"H	49"W x 30"H or 36"H
Optional Turntable Dimensions	18"	18"	36"	44"

**Additional options and custom/automated systems are available**

Closed-Loop Filtration and Rinse Gun, 460V@15 amps standard. 208V & 230V optional. 32 CFM/Gun @ 80 psi



**High Volume Liquid Abrasive and High Pressure Water Surface Finishing Systems**



wettechnologies.com

1363-11 LINCOLN AVE., HOLBROOK, NY 11741 / 631-285-7285 / FAX: 631-285-7288

www.wettechnologies.com / Email: info@wettechnologies.com