



## SHOT BLAST CLEANING SYSTEMS

 **BLASTRAC**

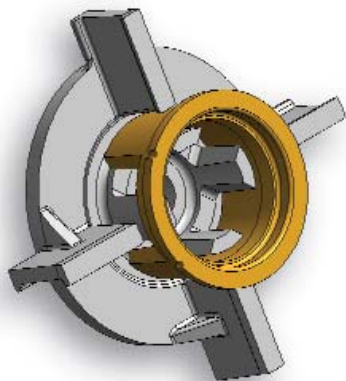
Blastrac® shot blasting is a cost-effective and environmentally friendly method for preparing concrete and steel surfaces. This labor and time-saving process strips, cleans and profiles simultaneously. It leaves the surface immediately ready for the application of coatings or overlays—eliminating drying time and costly disposal procedures associated with other surface preparation methods.

Shot blasting is the preferred method of surface preparation, recommended by most coating manufacturers. It produces excellent bonding characteristics that promote reduced coating failure and maximum floor life.

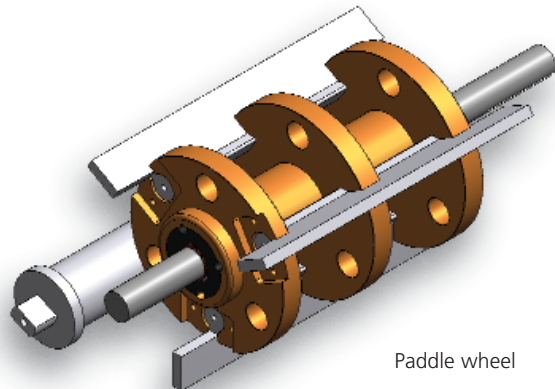
### HOW IT WORKS

Blastrac walk-behind shot blasting systems use a high performance, airless, **centrifugal wheel** for propelling blast media at a high velocity, in a controlled pattern and direction. Ride-on systems use a **paddle wheel** configuration. In both types, metal abrasive, thrown by the rapidly rotating blast wheel, is accelerated towards the surface being prepared. The media strikes the surface and rebounds along with removed contaminants into a recovery chamber (separator). The dust collector removes pulverized abrasive, dust and contaminants. Very little abrasive is lost and the usable media is returned to the storage hopper for recirculation by the blast wheel.

Different surface profiles can be achieved by varying shot size, shot flow rate and machine travel speed.



Centrifugal wheel



Paddle wheel

### CONCRETE

- Prepares concrete for recoating or application of overlays
- Removes markings, dirt and old coatings
- Prepares parking lots and garage decks
- Cleans factory and warehouse floors
- Ideal for airport runways
- Used on bridge decks, highways



*Brick*



*Nonskid surfaces on ship decks*



*Concrete*



*Airport runways*

### STEEL

- Removes paint, rust, mill scale and marine growth
- Cleans ship and aircraft carrier decks
- Removes nonskid coatings
- Cleans offshore platforms
- Prepares petroleum and water storage tank surfaces



*Steel storage tanks*



*Concrete warehouse floors*

### OTHER SURFACES

- Cleans brick or stone
- Removes paint pavement markings from asphalt surfaces

# SYSTEMS FOR SMALL TO MEDIUM SIZED JOBS

The Blastrac® 1-8DEZ and 1-8DEC are user-friendly systems designed for small to medium sized jobs or for use as complementary units on larger jobs.

- Dust collectors are not included with these systems

## 1-8DEZ

- 8" blast pattern. Manual travel speed. Prepares 50 to 250 sq. ft./hr.
- Runs on 120 volt power
- Use for light to medium removal
- Simple design has fewer moving parts for easy maintenance
- Edging capability to within  $\frac{3}{4}$ " of side wall with side magnet seals removed
- Front casters increase maneuverability and help provide a more consistent, even profile. Removable for edging
- Operates in forward (push) direction
- Useful for residential garage floors, balconies, pool decks, tight areas around equipment and obstructions, and test patches. Also used for concrete preparation prior to installation of wood flooring



## 1-8DEC

- 8" blast pattern. Manual travel speed. Prepares 50 to 350 sq. ft./hr.
- Runs on 230 volt power
- Use for light to heavy removal
- With side magnet seals removed, it cleans to within  $\frac{3}{4}$ " of side walls. In corners, it can clean to within  $1\frac{1}{2}$ " of the front wall
- Optional caster kit increases maneuverability and helps provide for a more consistent, even profile
- Useful for small industrial floors, tight areas around equipment and obstructions, preparing edges or corners



## 1-9DEZ

- 9" blast pattern. Manual travel speed. Prepares 50 to 275 sq. ft./hr.
- Runs on 120 volt power
- Use for light to medium removal
- Simple design has fewer moving parts for easy maintenance
- Edging capability to within  $\frac{3}{4}$ " of side wall with side magnet seals removed
- Front casters increase maneuverability and help provide a more consistent, even profile. Removable for edging

- Operates in forward (push) direction
- Useful for residential garage floors, balconies, pool decks, tight areas around equipment and obstructions, and test patches. Also used for concrete preparation prior to installation of wood flooring

## 1-8DPS30

- Low cost, high production introductory self-propelled blast unit
- 8" blast pattern. Prepares 50 to 450 sq. ft./hr.
- Self-propelled for even consistent surface profile
- Highly maneuverable, can be used for residential jobs
- 220 volt, single phase power



# WORKHORSE SYSTEMS FOR MEDIUM TO LARGE SIZED JOBS

These Blastrac® mid-range systems are the workhorses of the line. Tough, dependable and designed for medium to large sized jobs, these units are ideal for applications such as industrial plant and warehouse floors, parking garages, bridges, highways, airport tarmacs, ship decks and storage tanks.

- These systems feature self-propelled drive systems

## 1-10D and 1-10D Super

- 10" blast pattern. The **1-10D** prepares 200 to 1,000 sq. ft./hr. The **1-10D Super** prepares 250 to 1,200 sq. ft./hr.
- **1-10D** for light, medium or heavy removal. **1-10D Super** recommended for medium to heavy removal
- Redesigned separator, rebound plenum and blast housing increase shot cleaning efficiency, extending life of the wheel, liners and housing
- Easy-access, slide-out screen pulls out from the separator for quick removal of debris
- Cam style belt tensioning mechanism for the blast motor makes belt easier to tighten



## 1-15D Super

- 15" blast pattern. Prepares 350 to 1,900 sq. ft./hr.
- Wide pattern allows for a light blast, ideally suited for applications involving thin mil coatings
- Powerful enough for heavy removal
- High productivity, dual voltage machine
- Versatile machine for a large range of job sizes



## GPX 10-18

- 10" blast pattern. Ride-on unit prepares 200 to 1,500 sq. ft./hr.
- Use for light to medium removal
- Three wheels for superior maneuverability
- Patented paddle wheel technology
- Blast pattern adapter available for reducing blast pattern width for jobs such as line stripe removal
- Useful for jobs where a ride-on unit or propane power is desired



## HIGH PRODUCTIVITY SYSTEMS FOR LARGE JOBS

Large jobs require a high productivity machine like the 2-20D or 2-30D. These twin-blast-wheel systems clean and prepare concrete or steel surfaces with ease. Side-by-side positioning of the blast wheels assures an even pattern. For jobs that call for a ride-on unit or when electric power is unavailable, the Blastrac® GPX 16-65 ride-on system is an excellent choice. Use these Blastrac systems for industrial plant and warehouse floors, parking garages, ship decks, highway or bridge work, airport runways and tarmacs, and other large jobs.



### 2-20D

- 20" blast pattern. Prepares 350 to 3,500 sq. ft./hr.
- Recommended for light to medium removal
- Base elevates the machine for easier transport
- The drive system with integrated brake is designed for ramps and inclines, allowing for consistent travel speed
- Advanced separation system provides increased shot cleaning efficiency, promoting longer wear component life
- A high-speed travel switch helps ensure uniform preparation by allowing for quick repositioning after each pass, without resetting the travel speed



### 2-30D and 2-30D Super

- 30" blast pattern. The **2-30D** prepares 1,000 to 7,500 sq. ft./hr. The **2-30D Super** prepares 1,200 to 9,000 sq. ft./hr.
- Recommended for light to medium removal. Excellent for warehouse floors or thin mil coating applications
- Base elevates the machine for easier transport
- The drive system with integrated brake is designed for ramps and inclines, making these units ideal for parking decks
- A high-speed travel switch helps ensure uniform preparation by allowing for quick repositioning after each pass, without resetting the travel speed



### GPX 16-65

- 16" blast pattern. Prepares 250 to 3,500 sq. ft./hr.
- Convenient ride-on unit with dual fuel capability: gasoline or liquid propane
- Patented paddle wheel technology for medium or heavy removal
- Blast pattern adapter is available for reducing blast pattern width for jobs such as line stripe removal

# ACCESSORIES, PARTS AND SERVICE

## Magnets

Magnets are essential tools for cleaning the work area of metal debris prior to surface preparation, preventing damage to equipment. They are also helpful for quick job site cleanup after shot blasting, and for unloading shot from the machine hopper. The Blastrac® **hand-held magnet** cleans shot from small areas. **Magnetic brooms**, available in either 20" sweeper size or 25", 31" and 37" brooms, are designed for clearing large areas of stray shot, FOD or ferrous metal debris. Made of heavy duty aluminum, Blastrac magnetic brooms can take the abuse and will never rust.



## Trailers

Blastrac offers trailers for convenient transport of GPX 10-18 and GPX 16-65 type ride-on systems, or other surface preparation equipment.

Depending on model, these single axle, flat bed trailers offer tilt beds and variable position, fold-up ramps for easy loading and unloading.

## Replacement Parts

Blastrac stocks a complete line of replacement parts that are designed to provide optimal performance for your Blastrac shot blasting systems. Call Blastrac for your wheel kits, blade kits, liners, dust collector filters, skirt seals and shot. We offer immediate overnight delivery for most common wear parts and replacement items.

Keep it in stock! Contact your Blastrac representative for a list of recommended spare parts and avoid costly delays.

## Start-up Training

Get the most from your Blastrac shot blasting system. Blastrac offers start-up training for your operator. With this training, a qualified Blastrac representative will provide a refresher course for experienced personnel or instruct your new operator on machine fundamentals:

- Unloading and loading equipment for transport
- Tips for machine power hook-up
- Proper machine operation
- Tips for maximizing productivity
- Making blast wheel adjustments
- Adjusting the blast pattern
- Checking for and achieving proper belt tensioning
- Machine lubrication
- Equipment maintenance schedules
- End-of-day procedures
- SPARC School for advanced training in surface preparation

## Additional Blastrac Systems

Blastrac offers these and other systems for your largest concrete jobs, or for steel applications.



2-4800DH shot blast cleaning system



500E steel shot blast cleaning system



Vertical steel shot blast cleaning systems

## SPECIFICATIONS

	1-8DEZ	1-9DEZ	1-8DEC	1-8DPS30	1-10D	1-10D SUPER
Production Capacity*:	250 sq. ft./hr.	280 sq. ft./hr.	350 sq. ft./hr.	450 sq. ft./hr.	1,000 sq. ft./hr.	1,200 sq. ft./hr.
Cleaning Path:	8"	9"	8"	8"	10"	10"
Travel Speed:	Manual	Manual	Manual	2-75 ft./min.	0-85 ft./min.	0-85 ft./min.
Blast Motor:	3.35 h.p.	3.35 h.p.	3 h.p.	4 h.p.	10 h.p.	15 h.p.
Voltage:	120 V, 1ø, 50/60 Hz	120 V, 1ø, 50/60 Hz	230 V, 1ø, 60 Hz	220 V, 1ø, 60 Hz	230/460 V, 3ø, 60 Hz	230/460 V, 3ø, 60 Hz
Amperage:	18 A	18 A	16.8 A	12.8 A	38.0/18.5 A	49.0/23.5 A
Total System Current:	N/A	N/A	N/A	N/A	59.3/29.6 A	70.3/34.6 A
Minimum Generator:	15 kW	15 kW	15 kW	15 kW	30 kW	40 kW
Dimensions (LxWxH):	45" x 12.5" x 38"	45" x 13.5" x 38"	47" x 12" x 39"	52" x 16" x 55"	63" x 17" x 40"	63" x 17" x 40"
Weight:	123 lb.	135 lb.	181 lb.	353 lb.	706 lb.	736 lb.
Dust Collector†:	BDC-1216 or 1-13	BDC-1216 or 1-13	BDC-1216 or 1-13	3-28DC, BDC-317 or BDC-317P	6-54	6-54

	1-15D SUPER	2-20D	2-30D	2-30D SUPER	GPX 10-18	GPX 16-65
Production Capacity*:	1,900 sq. ft./hr.	3,500 sq. ft./hr.	7,500 sq. ft./hr.	9,000 sq. ft./hr.	1,500 sq. ft./hr.	3,500 sq. ft./hr.
Cleaning Path:	15"	20"	30"	30"	10"	16"
Travel Speed:	0-85 ft./min.	0-108 ft./min.	0-92 ft./min.	0-92 ft./min.	0-200 ft./min.	0-200 ft./min.
Blast Motor:	20 h.p.	15 h.p., 2 motors	15 h.p., 2 motors	20 h.p., 2 motors	25 h.p.	65 h.p.
Voltage:	230/460 V, 3ø, 60 Hz	460 V, 3ø, 60 Hz	460 V, 3ø, 60 Hz	460 V, 3ø, 60 Hz	Liquid propane	Gasoline/liquid propane
Amperage:	70.0/33.5 A	46 A	46 A	59.8 A	N/A	N/A
Total System Current:	91.3/44.6 A	59.3 A	59.3 A	73.1 A	N/A	N/A
Minimum Generator:	60 kW	60 kW	60 kW	60 kW	N/A	N/A
Dimensions (LxWxH):	79" x 23" x 42"	75" x 30" x 47"	75" x 39" x 48"	75" x 39" x 48"	78" x 34" x 57"	104" x 62" x 66"
Weight:	847 lb.	1,235 lb.	1,375 lb.	1,575 lb.	1,516 lb.	3,200 lb.
Dust Collector†:	6-54	8-54	8-54	8-54	On-board system, 1,400 cfm, 4.5 cu. ft.	On-board system, 2,600 cfm, 6.5 cu. ft.

\* Production rates achieved are affected by variables specific to each job site. These figures are not guarantees of performance.

† Always wear respirator protection, appropriate for the application, as specified by OSHA regulations and your employer. Never operate or maintain equipment before reading and understanding the instructions for operation and maintenance. Obey all safety signs and instructions while operating or maintaining equipment.

‡ Based on blower performance under standard atmospheric conditions. Maximum air flow and maximum static pressure cannot be achieved at the same time. Dust bag/bin values are based on 60% available dust bag/bin volume and material weight of 90 lb. per cubic foot.



800-256-3440 • fax 800-547-5838 • [blastrac.com](http://blastrac.com)

Products manufactured and marketed by Blastrac are protected by patents issued or pending in the United States and other countries. Blastrac reserves the right to change the specifications referred to in this literature at any time, without prior notice. Blastrac is a registered trademark owned by Blastrac, NA.